



LCC

Spotlight

Lighthouse Christian Camp 9574 Somerset Drive Barker, New York 14012

March 2009

P I am writing this month's column from Hope Africa University in Burundi, where Darlene and I have spent the past six weeks. Darlene has taught two sections of Physical Assessment to the Nursing students. I have taught two courses in the M.A. in Theological Studies program: Biblical Hermeneutics (methods of Bible study and interpretation), and Systematic Theology.

r While we have been away, our retirement accounts have continued to decline. However, we are still comparatively wealthy.

e The full-time faculty at Hope Africa University make about \$120 per month, the staff \$40 per month. Many students have no money, and are reduced to begging. While it is a badge of honor to be a "pastor," most pastors receive no pay, and are dependent on non-cash gifts for survival.

s We sometimes "talk poor," but these people are truly poor. Economically, that is. Spiritually, they are rich. Indeed, in this regard, they are comparatively wealthy.

i The Free Methodist Church is alive and growing in central Africa, where it is the largest Protestant church. Burundi, where Hope Africa University is located, is a very small nation (and ranked as one of the poorest in the world). It is about the size of Maryland. But there are as many Free Methodists (100,000) in Burundi as there are in all of the U.S. and Canada. And there are even more Free Methodists in the neighboring nations of Rwanda (120,000) and the Democratic Republic of Congo (140,000)! Moreover, the church is still growing!

d This past Sunday, I preached at a Free Methodist Church in the countryside 25 miles south of the capital city of Bujumbura. The service began at 9 a.m. with congregational singing and concluded with prayer at 12 noon. During the service, special music was presented by nine choirs! Every person introduced began by exclaiming "Hallelujah," to which the congregation responded in chorus, "Hallelujah!"

e Financially, these people are comparatively poor. But spiritually, they are truly rich. Their lives are blessed in worship, and they are filled with singing and joy.

n If you count your many blessings, and name them one by one, are you rich or are you poor? I pray that your spiritual assets are on the rise! And I pray that the 2009 camping season at LCC will be--for one and all--a time of numerous spiritual blessings...as we come to know Christ, to grow in Him, and to make Him known!

Memorial Day Weekend

Saturday, May 23rd
Association Meeting at
9:00 am (Dining Hall)
Used Book Sale (Thayer
Library) at about 11:00am
Potluck Dinner 5:30 pm
(Dining Hall)

Families A-L bring a
Main Dish and a Salad
M-Z bring a Main Dish
and a Dessert

All families need to bring their
own table service.
Drinks will be provided.

Sunday, May 24th at
10:30 am (Tabernacle)
Rev. Matthew Hill,
Associate Pastor from the
Gowanda Free Methodist
Church will be bringing the
message.

More details will be on the web
site, lighthousecamp.org,
as they are added to the
weekend events

Rental units and campsites
are still available, call
716-795-3216 or email
lighthousecamp@aol.com
for more information.

During the fall and winter months several things have been happening to keep the Dining Hall Complex Project (DHCP) moving forward. A professional engineer, Scott Dehollander, has been on site, taking elevation readings and site measurements. The DEC has been on site to review drainage and evaluate existing trees. Our architect, Keith Snyder, has been busy developing building plans and options. I have had discussions with many contractors regarding the project.

In mid February just before I left for Florida, I picked up the preliminary site plan from Scott and the preliminary building plans from Keith. Our next step is to move these to final form so that we can begin to move toward bids to get the project moving in mid August as planned. Over the next few weeks there will be Building Committee, Board Meetings, etc. to review, adjust, and bring these plans to closure. Please pray that this process will work well as we move to final plans.

On Feb 19th I did have an occasion to meet with about 15 LCC people at Light and Life Park in Lakeland and show them the drawings I had just received. We had a good discussion, lots of good questions and also some "Did you consider...." kinds of questions. I will be glad to talk to any of you who are interested about the project plans to date.

It appears that the state of the economy may help us in this project. Many contractors are interested in working on the project and this could be effective in less costly bids. There has also been some indication of lower material prices.

Please keep this project in your daily prayer list, asking for God's guidance and help as we move this project forward in the next few months.

Chip Duncan,
General Manager

LCC Phone Number: 716-795-3216
Email: Lighthousecamp@aol.com
www.lighthousecamp.org
Chip Duncan, General Manager
Cell Phone: 585-414-4302
Email: duncan3@rochester.rr.com
Jack Baker, Building & Grounds Manager
Wendy Grosshans, Administrative Assistant

Getaway Camp

Mark your calendar now for GC 2009!

**Brad and Eileen Button
will be joining us
as co-speakers.**

Getaway Camp is Saturday, August 8 to Friday, August 14. Plan to join the fun and fellowship that will be Getaway Camp 2009.

Did you miss going roller skating last year? We plan to have another fun filled afternoon of roller skating. How about the bike ride-you won't want to miss this year's ride. It is sure to be a lot of fun.



The progressive campfire will be back!

As always, Getaway Camp will have great music, age level classes, and many family based activities.



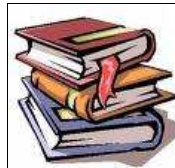
We look forward to seeing you this year at Getaway Camp!



If you are willing to help or have an idea that you think we might be able to use, please don't hesitate to contact Sheryl Hunt at sherylhunt@hotmail.com or 585-293-3122.

Used Book Sale

Saturday, May 23
(Memorial Day weekend)
In Thayer Library following
the Association Meeting



Proceeds to benefit LCC

Donations of gently used books, videos, DVD's, CD's, games, and puzzles are welcome and may be dropped off in the office, after May 1st.



KEEN KAMP MISSION FUND RAISER

KEEN KAMP is planning on raising money for missions in a variety of ways. One way is to have **BIKE RACKS** built for your cottage. Tell us if you would like a rack and for how many bikes. The profits will go towards missions and the bikes will have a home. Think about it, and more details will be coming. Contact Alberta Anderson at 585-594-2667 or by email at alberta2@rochester.rr.com.

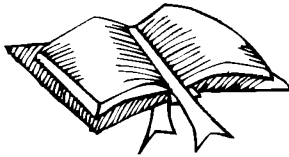
SILENT AUCTION FOR MISSIONS

Donations for the auction to raise funds for Missions will be appreciated. Some early donations include:

Original Painting
Stained Glass Piece
Afghan
Hand Crafted Purses, etc.

Donated items should be valued at \$20 or more.

Email Bev & Friend Williams at friendly6@juno.com to let them know of your donation.



Keen Kamp 2009

July 26-31



Make your reservations very soon! Don't miss these days together with old and new friends.



HE REIGNS

Family Camp 2009

Friday, July 3rd thru Saturday, July 11

Dr. Timothy Dwyer from Roberts Wesleyan College will be our FC Speaker.

Saddle up your horses for a rompin' good time at Family Camp 2009!

Join us for an exciting July 4th weekend. FC will begin on Friday evening with dinner and afterglows to follow. Get the holiday started off right at the Patriotic July 4th Service. Then, "COME AND GET IT" at the July 4th annual Chicken BBQ followed by a wheelin' good time on the bike parade trail. Then you will want to rustle up your bandanas, cowboy boots and hats, and western wear for the Hoe Down!

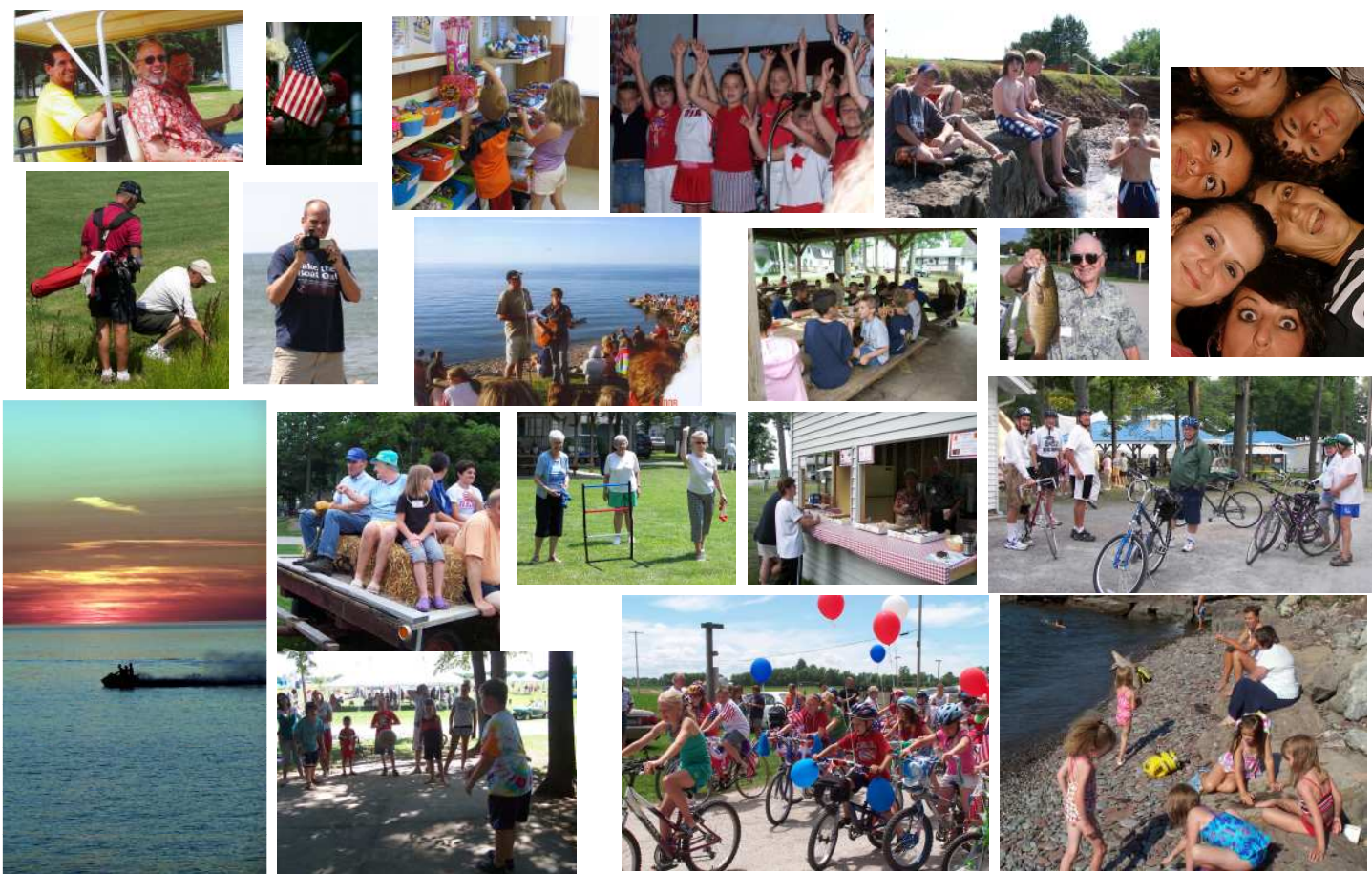
Jason & Kari Smith are asking for your help with the FC Auction. Donate a basket, or a service, such as, a boat ride or a jet ski ride. Baked goods are always a hit at the auction. Contact Jason or Kari at kariksm@ptd.net

Many exciting afterglows are being planned.
Classes are for all ages.

Crafts for both kids and adults are always a great time.

If anyone would like to volunteer for Special Music for the evening service, please contact Ray Lukowski at RayLukowski@gmail.com or 585-530-9150 or Henry Viola at henry14617@frontiernet.net or 585-402-0286.

Check out the Lighthousecamp.org for many more details on Family Camp 2009!



Upcoming 2009 Events

Memorial Day Weekend
May 23-May 25

Family Camp

Friday, July 3-Saturday, July 11

Lynelle Brady & Alison Lukowski, Co-Chairs

Timothy Dwyer, FC Speaker

Keen Kamp

July 26 - July 31

Ron & Janet Follansbee, Co-chairs

Linda Adams, KK Speaker

Golf Tournament

August 1

Jim Sullivan, Chair

Getaway Camp

Saturday, August 8 - August 14

Sheryl Hunt, Chair

Brad & Eileen Button, GC Co-Speakers

Labor Day Weekend

September 5 - September 7

More information will be forthcoming on these special events. Plan to join us for as many of these as possible.

10th Annual Golf Tournament 2009



Lighthouse Christian Camp

Saturday, August 1, 2009

Niagara Orleans Country Club

Entry Fee Will Include:

- | | |
|--|---------------|
| Green Fees | Golf Cart Use |
| Continental Breakfast | Lunch |
| Awards | Buffet Dinner |
| Hole-in-One Shoot-Out | |
| A Tax Deductible Gift to Lighthouse Christian Camp
for Capital Projects | |

**All golfers are invited to play,
regardless of your level of play.**



PRIZES

- | | |
|------------------------|-----------------------|
| Top-flight best scores | Closest to the pin |
| Longest drive | Putting green contest |
| Hole-in-one shoot-out | Door prizes |

The tournament will be played with four-person team, scramble format. You can form your own team of four or we can assign you to a team. For additional information and sponsorship opportunities, call (716) 795-3216 or email LighthouseCamp@aol.com